

Smart Wire-Free Security Camera System

Tapo C420S1



2K
QHD

Tapo C420S2



works with
alex

Tapo C420S4

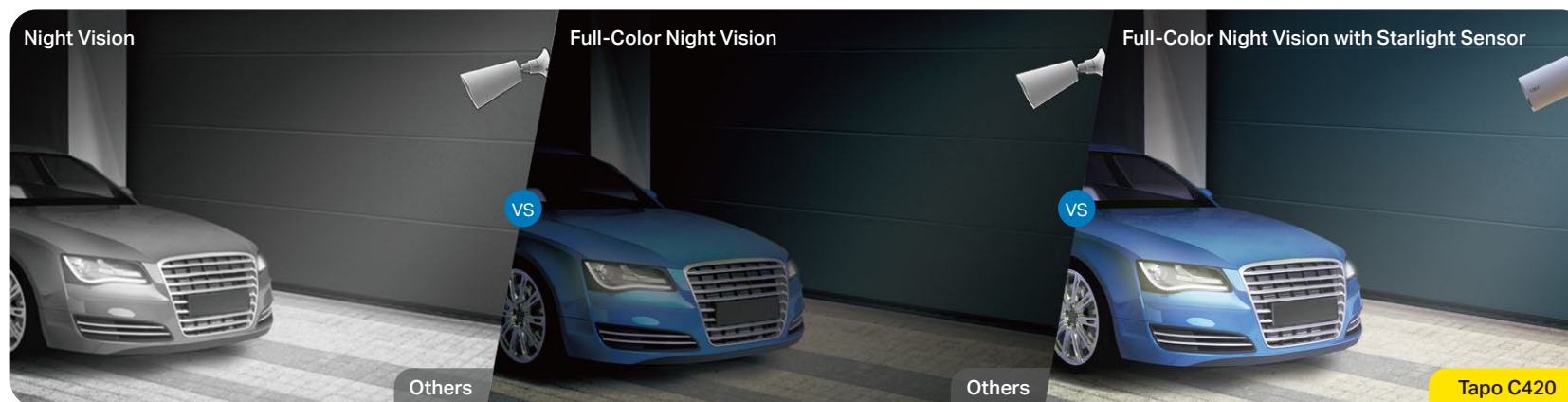


works with
Google Home

// Highlight

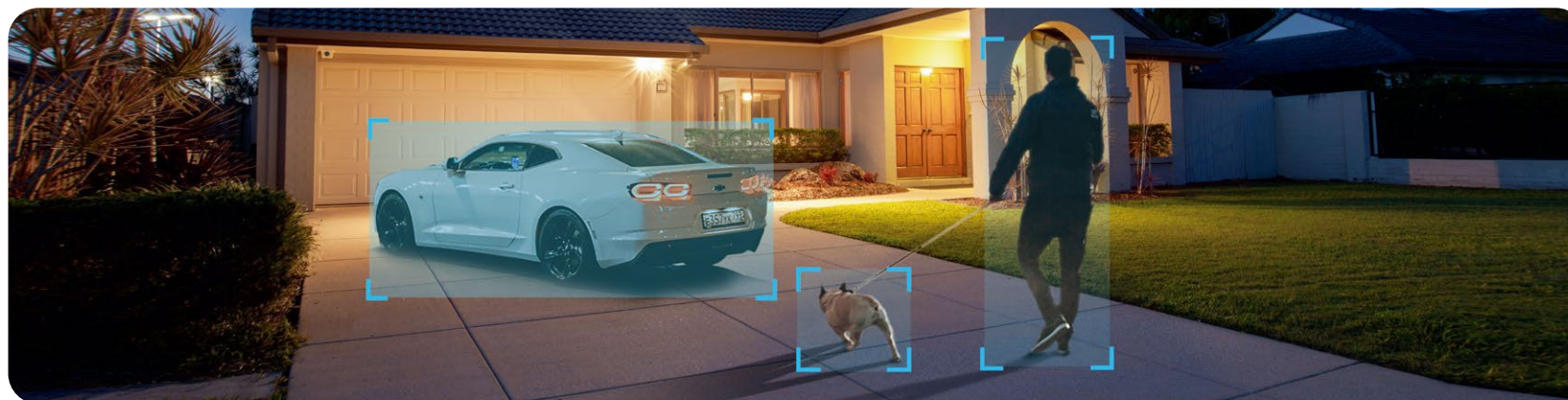
Enhanced Color Night Vision

Reveal high-fidelity details and color at night with the spotlights and starlight sensor.



Free Person/Pet/Vehicle Detection

Smart AI identifies people, pets, and vehicles, notifying users as needed.



// Features



2K QHD

Now with 1.7 times more pixels than 1080p, providing clearer videos and photos.



Color Night Vision

Reveal high-fidelity details and color at night with the starlight sensor.



180-Day Battery Life^Δ

The rechargeable and removable battery with a low-power protocol extends your usage.



Wire-Free Placement

No wires means you can place the cameras almost anywhere inside or outside – whatever works for you!



Sound and Light Alarm

Trigger sound and light as an alarm when motion is detected.



Two-Way Audio

Enables communication through a built-in microphone and speaker.



IP65 Weatherproof

Helps Tapo camera perform well even in harsh environments with rain and dust.

Note: The hub can be used indoor only.



Flexible Storage Choices

Save recorded videos on the hub-installed microSD card[†] (up to 512 GB) or by using Tapo Care^{**} cloud storage services.

// Specifications

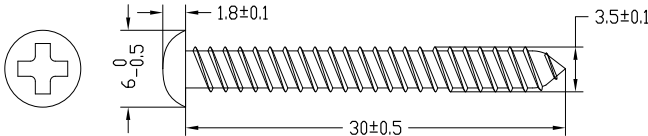
| | | |
|--------|----------------------|---|
| Camera | Image Sensor | 1/3" Progressive Scan CMOS Starlight Sensor |
| | Lens | Focal Length: 3.2 mm Aperture: F1.6 Field of View: 113° (Diagonal), 97° (Horizontal), 54° (Vertical) |
| | Night Vision | 850 nm IR LED (49 ft / 15 m) Color Night Vision |
| | Night Mode | IR Mode / Full-Color Mode / Smart Mode |
| | Day/Night Switch | IR-Cut Filter with Auto-Switching |
| | Lighting | 2× Built-in Spotlights |
| | Interface & Button | 1× SYNC/RESET Button |
| | Hub Compatibility | Compatible with H200 (Included) |
| Hub | Device Compatibility | Works with Tapo smart sensors, buttons, Sub-1G switches, cameras, and video doorbells. Supported Products: T100/T110/T300/T310/T315/S200B/S200D/S210/S220 C420/C400/D230... More coming soon: https://www.tp-link.com/tapo-h200/product-list/ |
| | Connection Capacity | Up to 64 Sub-1G switches, sensors, or buttons + 4 cameras or video doorbells |

| | | |
|--------------------------|---------------------------------|--|
| Hub | Interface & Button | 1× Ethernet Port 1× RESET Button 1× SYNC Button 1× microSD Card Slot (Up to 512 GB) |
| | | |
| Video & Audio | Maximum Resolution | 2K QHD 4MP (2560 × 1440 px) |
| | Frame Rate | 15 fps/20 fps |
| | Digital Zoom | 12× |
| | Video Compression | H.264 |
| | Live View | Yes |
| | Image Enhancement | 3D DNR WDR |
| | Audio Input & Output | Built-in Microphone and Speaker |
| | Audio Communication | Two-Way Audio with Noise Cancellation |
| Storage | Siren Volume | Camera: 92 dB (Level measured at 4-inch/10-cm distance) Hub: 100 dB (Level measured at 4-inch/10-cm distance) |
| | Local Storage | microSD Card Slot on Hub (Up to 512 GB) |
| | Cloud Storage | Tapo Care Cloud Storage Services (Subscription required) |

| | | |
|-------------------------------------|--|--|
| Detection & Notification | Sensor | Single Motion Sensor (FOV: 110° horizontal) Single Ambient Light Sensors |
| | Detection | Motion Detection Person Detection Pet Detection Vehicle Detection |
| | Activity Zones | Yes |
| | Output Notification | System Notification System Notification with Snapshot (Tapo Care Services) System Notification with Clips (Tapo Care Services) |
| Network | Network Connectivity | Connect via Wi-Fi or Ethernet |
| | Wireless Connectivity | IEEE 802.11b/g/n, 2.4 GHz Wi-Fi Sub-1G, 868MHz or 922MHz (Used for local connection between camera and hub) |
| | Transmission Rate | Camera: 11b: 11 Mbps 11g: 54 Mbps 11n: 72.2 Mbps Hub: 11b: 11 Mbps 11g: 54 Mbps 11n: 300 Mbps |
| | Protocol | TCP/IP, ICMP, DNS, HTTPS, TCP, UDP |
| | Max. Distance Between Hub and Camera/Doorbell | 524.93 ft / 160 m * |
| Network | Ethernet Port | 1× 10/100 Mbps RJ45 Port on Hub |

*Actual distance will vary based on many factors, such as the thickness of the walls, obstructions within the house, and the location of the router.

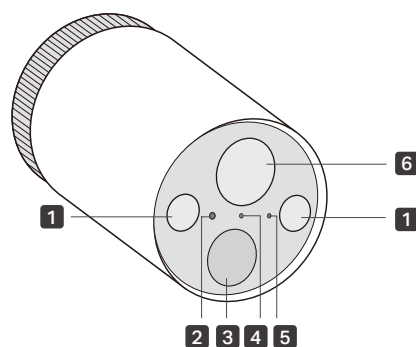
| | | |
|-----------------|----------------------------------|--|
| Security | Security | 128-bit AES Encryption with SSL/TLS WPA/WPA2-PSK |
| | Power Source | Hub: 9V DC Power Adapter Camera: Removable Rechargeable Lithium-ion Battery Optional Solar Panel: Tapo A200 (Sold separately) |
| Power | Input Voltage | Camera Battery Pack Adapter Input: 100-240 V, 50/60 Hz Hub Adapter Input: 100-240 V, 50/60 Hz, 0.3 A |
| | Output Voltage | Camera Battery Pack Adapter Output: 5.0 V, 1.0 A Hub Adapter Output: 9.0 V, 0.85 A |
| | DC Power Connector Size | Hub Adapter: Inside Ø: 0.08 in. / 2.1 mm Outside Ø: 0.22 in. / 5.5 mm |
| | Power Cord Length | Hub Adapter Cord Length: 4.92 ft / 1.5 m USB Adapter Cable Length: 1.64 ft / 0.5 m |
| | Typical Power Consumption | Camera Typical Power Consumption: 0.928 W |
| | Maximum Power Consumption | Camera Max Power Consumption: 2.39 W |
| General | Certifications | CE, FCC, RoHS, RCM |
| | Smart Integration | Google Assistant, Amazon Alexa |
| | Weather Resistance | IP65 (Camera) |
| | System Requirements | Tapo App: iOS 11.0 or higher, Android 5.0 or higher |
| | Mounting Options | Tabletop Ceiling-Mounted Wall-Mounted |

| | | |
|---------|-----------------------|--|
| General | Operating Temperature | Camera: -20°C ~ 45°C (-4 °F ~ 113 °F) Hub: 0°C ~ 40°C (32 °F ~ 104 °F) |
| | Storage Temperature | -20°C ~ 60°C (-4 °F ~ 140 °F) |
| | Operating Humidity | 10%~90% RH, Non-condensing |
| | Storage Humidity | 5%~90% RH, Non-condensing |
| | Charging Temperature | 0°C ~ 55°C (32 °F ~ 131 °F) |
| | Screw Size |  |
| | Dimensions | Camera Dimensions: 4.35 × 2.52 × 2.52 in (110.6 × 64.2 × 64.2 mm) Hub Dimensions: 2.8 × 2.8 × 1.2 in (71.45 × 71.45 × 31.25 mm) |
| | Weight | Camera Weight: 5.88 oz / 166.74 g Hub Weight: 2.54 oz / 71.9 g |
| | Package Contents | For Tapo C420S1: Tapo C420 Camera ×1 Tapo H200 Hub ×1 Tapo A100 Battery ×1 USB Adapter ×1 USB Adapter Cable ×1 Power Adapter ×1 Mounting Anchors ×3 Mounting Screws ×3 Mounting Template ×1 Camera Bracket ×1 RJ45 Ethernet Cable ×1 Quick Start Guide |

| | | |
|---------|------------------|---|
| General | Package Contents | <p>For Tapo C420S2:</p> <ul style="list-style-type: none"> Tapo C420 Cameras ×2 Tapo H200 Hub ×1 Tapo A100 Batteries ×2 USB Adapter ×1 USB Adapter Cable ×1 Power Adapter ×1 Mounting Anchors ×6 Mounting Screws ×6 Mounting Templates ×2 Camera Brackets ×2 RJ45 Ethernet Cable ×1 Quick Start Guide |
| | | <p>For Tapo C420S4:</p> <ul style="list-style-type: none"> Tapo C420 Cameras ×4 Tapo H200 Hub ×1 Tapo A100 Batteries ×4 USB Adapter ×1 USB Adapter Cable ×1 Power Adapter ×1 Mounting Anchors ×12 Mounting Screws ×12 Mounting Templates ×4 Camera Brackets ×4 RJ45 Ethernet Cable ×1 Quick Start Guide |

// Appearance

Front



1 Spotlights

2 Light Sensor

3 Motion Sensor

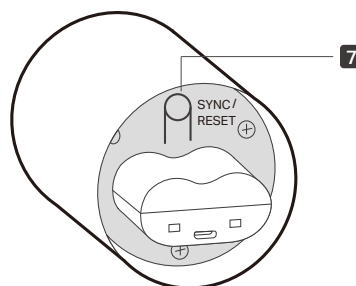
4 Status LED

Indicate the status of your camera.

5 Microphone

6 Lens

Back



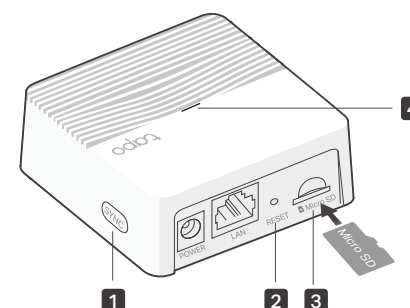
7 SYNC/RESET Button

While the camera is powered on:

Press for 1 second: Pair with the hub

Press and hold for about 5 seconds: Reset the camera

Hub Appearance



1 SYNC Button

Press to pair with the camera, or silence the hub when it rings.

2 RESET

Use a pin to press and hold for about 5 seconds until the hub LED quickly blinks red to reset the hub.

3 microSD Card Slot

Insert a microSD card to record camera videos locally. Initialize the microSD card within the Tapo app first.

*microSD card not included.

4 Status LED

Indicate the status of your hub.

Notes: Connect up to 4 cameras to a hub.

Note: The hub can be used indoor only.

^A180-day battery life is based on TP-Link's laboratory testing with 10-20 triggered events per day. Actual battery life may vary based on device settings, use, and environmental factors.

^ImicroSD card needs to be purchased separately.

^{**}Tapo Care needs to be subscribed separately.

Specifications are subject to change without notice. All brands and product names are trademarks or registered trademarks of their respective holders.

©2024 TP-Link